

The action of Suzu City to make the opportunity  
for children to learn about the relationship of  
agriculture and biodiversity.

子供達が農業と生物多様性の関係を  
学ぶ機会を作る珠洲市の取組み

Daisuke Utsunomiya

Sustainable Society and Ecosystems  
Office, Suzu City



Noto peninsula

MINABE

# Noto peninsula surrounded by Satoyama Satoumi



GIAHS

## Noto's Satoyama Satoumi



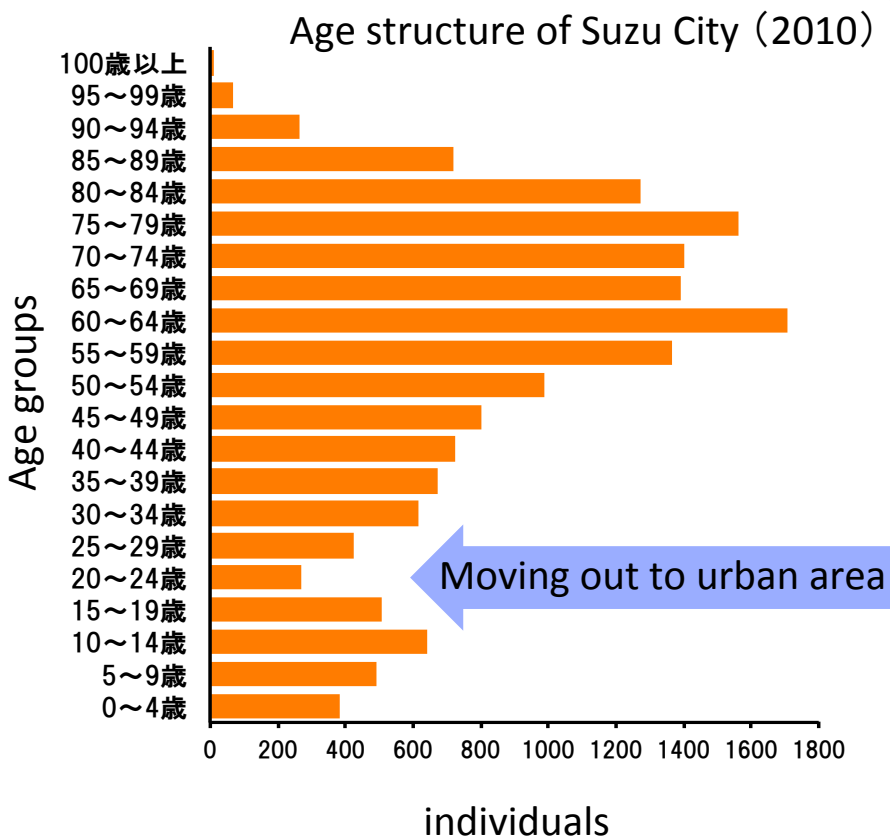
# Introduction of Suzu City

- Population: 14,500 (Jul/31/2018)

(Reference) Population when designated a municipality 38,157 (1954)

- Households: 6,179
- Percentage persons age 65 and above: Approx. 47%
- Area: 247.20 km<sup>2</sup>

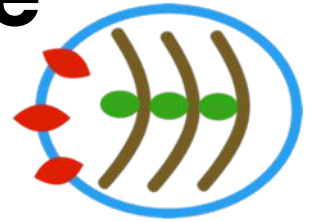
- Daycare centers: 9
- Elementary schools: 9
- Junior high schools: 4
- High schools: 1



# Roles of Sustainable Society and Ecosystems Office, Suzu City



**To aim at sustainable coexistence  
between people and nature**



Conservation and wise use of Satoyama Satoumi

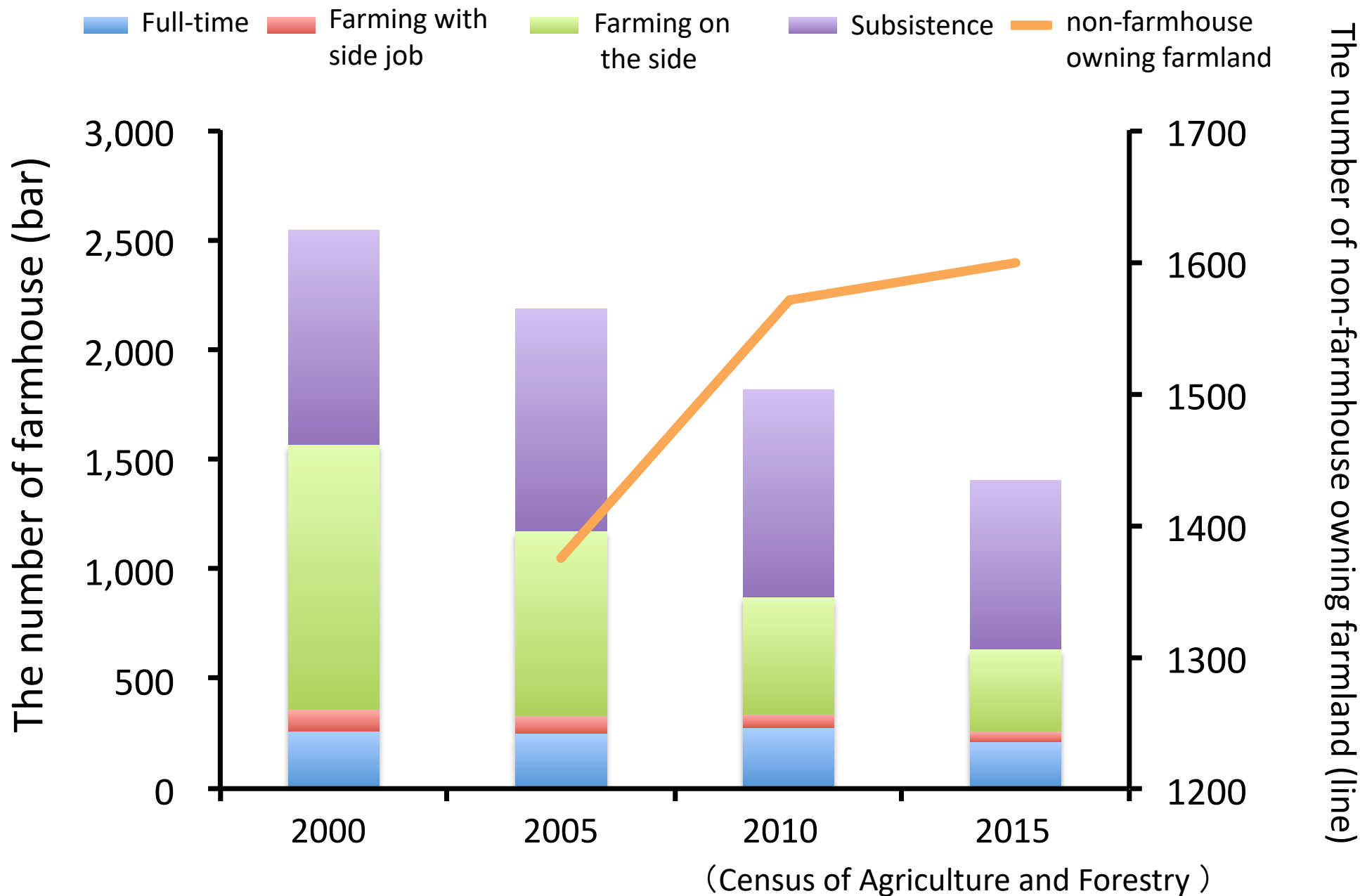
Promote SDGs

Conservation of biodiversity



# Problems of the conservation of Satoyama

# Decreasing farmhouse in Suzu City



# People are decreasing acquaintance with Satoyama Satoumi

Decrease and/or aging of farmers

Decreasing the number of population  
who usually use of Satoyama

Decreasing of the opportunity to inherit  
usage and knowledge of Satoyama

Increasing the people who have no interest  
in Satoyama



# Biological Observation Events in Satoyama

**Aim: To show relationships between agriculture  
and daily life and biodiversity**

- All 9 elemental schools in Suzu City
- 3<sup>rd</sup> grade elementary students
- Aquatic organisms

# **What children learn through this program are ...**

- ✓ **Many aquatic species live in the paddy fields**
- ✓ **Species composition changes by a place and time**
- ✓ **Paddy fields is the place making rice**
- ✓ **Since farmers make rice, the paddy fields and the neighboring watersides are maintained**

# Sites of the program

A observation site set near each school

2 watersides in the site

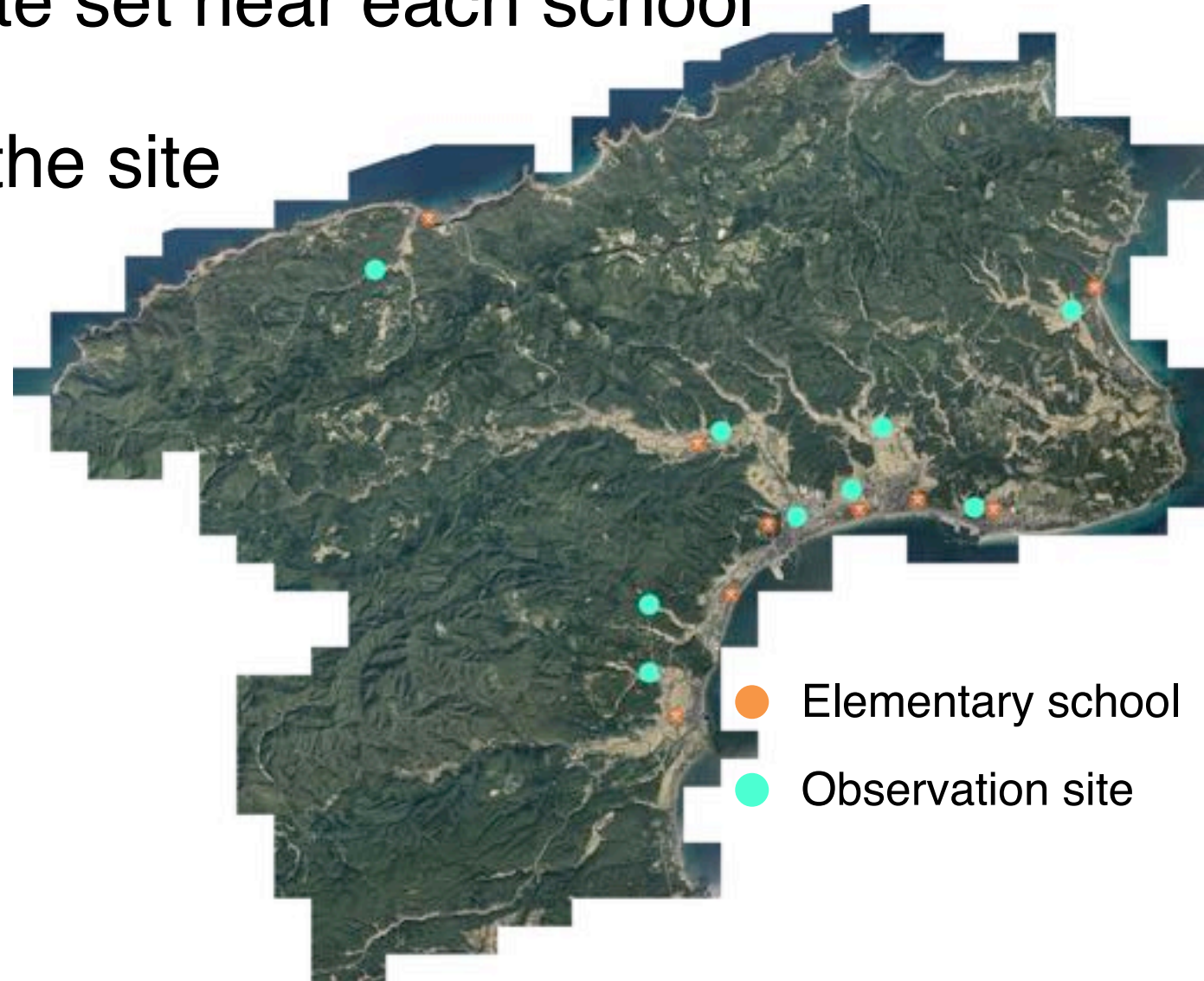
Paddies

Ponds

Rivers

Canals

Biotopes



# Annual schedule

## ① 1<sup>st</sup> observation events (May, June)



## ③ Summarize information (Sep.– Nov.)



## ② 2<sup>nd</sup> observation events (September)



## ④ Presentation (December)





# Observed aquatic animals since 2012

Total: 138 species

Fishes: 6 species

Amphibia: 8 species

Shellfishes: 8 species

Insects: 104 species

Crustaceans: 8 species

Others: 4 species



(Photo by Shinya Nomura)

Endangered species: 22 species

Alien animals: 1 species

# Opinion from the person concerned

## Appreciation

The valuable opportunity when children touch nature of Satoyama Satoumi

The good opportunity to awareness of differences of nature among school

This program should continue

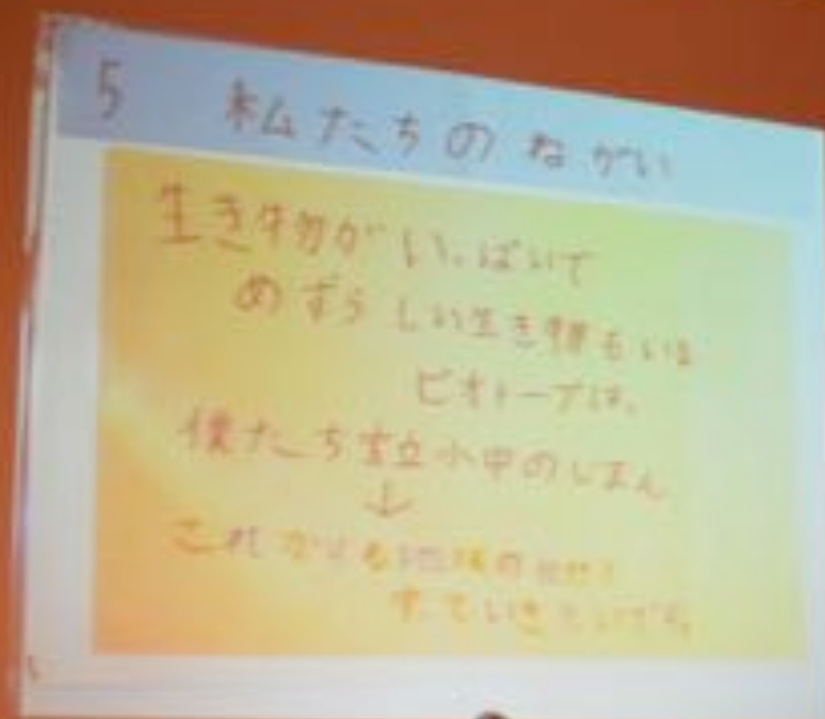
## Improvement

Making opportunity to participate the field observation with parents

This program should carry out repeatedly even other school years

Effort to tell more people about this program

Necessity of a fund and talent training to continue



Thank you